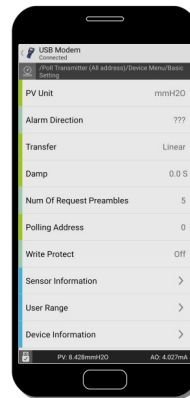


PRESSURE TRANSMITTER

AI.EBar-LT



INTRODUCTION

AI.EBar-LT is a pressure transmitter with IP65 protection. The sensitive element consists of a pressure sensor with piezo-resistive technology. The quality level of AI.EBar-LT is high, the measurement is highly stable, reliable and precise. The materials used for the construction make AI.EBar-LT a pressure transmitter, as well as accurate and reliable, resistant and suitable for heavy-duty applications, especially in the marine and industrial sectors.

The electrical connection is available in two ways: by DIN43650 connector or by IP68 cable direct output. With compact dimensions, the instrument is suitable for a lot of installations. For its connection is enough: a 2-wire power supply, 12-30 VDC with signal retransmitted in series, 4-20mA Hart, 2-wire technique.

FEATURES

- Ideal solution for pressure measurement of liquids and gases in tanks
- Suitable for measuring the hydrostatic head in tanks
- Compact execution, does not require external programming
- Sensitive element with high reliability, precision and stability
- Wide possibilities of use for fluids and gases compatible with AISI316L and Tantalum
- Main markets of use: naval, industrial, chemical, aqueduct and much more
- Sealed relative, absolute and relative pressure measurement
- Connection via HART Protocol and programmable via Modem + Smartphone App

TECHNICAL SPECIFICATIONS

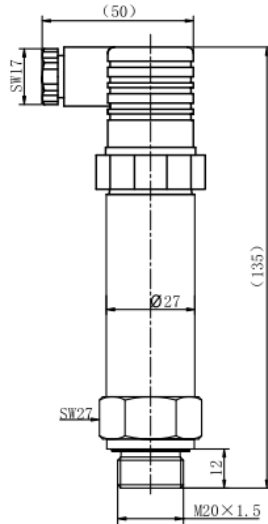
- IP65 protection with DIN43650 Connector
- IP68 with cable direct output
- Accuracy: 0,25% FS
- Long term stability: +/- 0.2% FS / year
- Compensation temp.: -10 °C ~ 70 °C
- Operation temp.: -30+80°C with DIN43650 connector; -10+70°C with cable direct output
- Storage temp: -40 °C ~ 85 °C
- Supply: 12-30 VDC
- Output: 4-20mADC (2 wire)/4-20mADC (2 wire) Hart

Measurement range (mH2O)	-1	1	2	3,5	7	10	20	35	70	100
Overpressure (mH2O)	-1	1,5	3	5	10	15	30	50	100	150

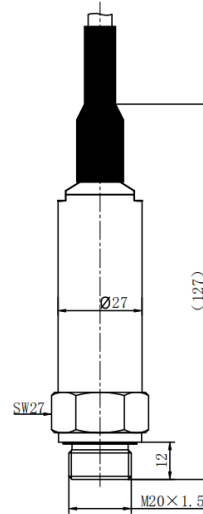
CONSTRUCTION MATERIALS

- Housing: SS304/SS316L
- Pressure port: SS304/SS316L
- Diaphragm: SS316L

DIMENSIONS



DIN43650 Connector
G 1/2"
NPT 1/2"
M20x1.5



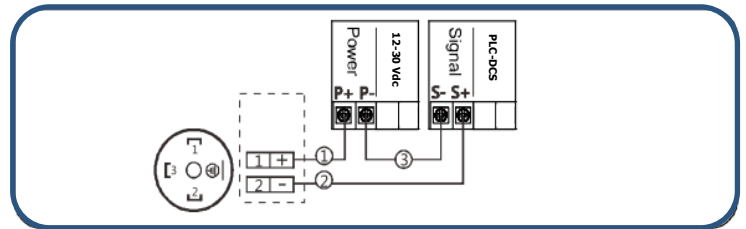
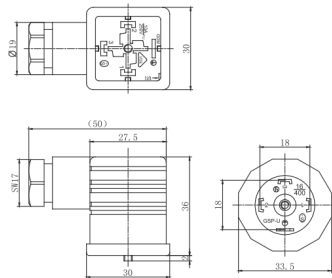
IP68 cable direct output
G 1/2"
NPT 1/2"
M20x1.5

ELECTRICAL CONNECTIONS

The transmitter connects to the external circuit in two ways:

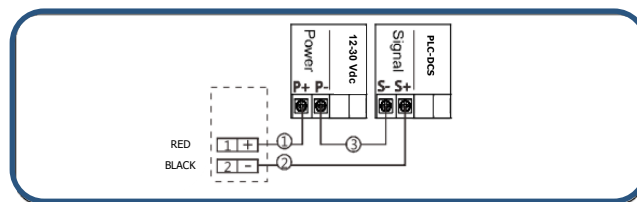
- DIN43650 Connector

Connector	2 wire
1	+V
2	OV/+OUT
3	GND




- IP68 cable direct output

Connector	2 wire
Red	+V
Black	OV/+OUT

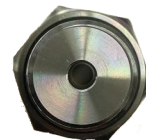


MARINE TYPE APPROVAL

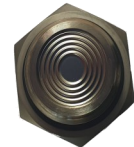
Register	Description	Country
	RINA Naval, Ships buildings Certificate N. ELE141020CS Ref. Doc. No. 03.2003 rev.2	International

ORDER CODE

AI.EBar-LT	Pressure Transmitter		
Range (Pressure Range)			
100mbar/200mbar/500mbar/1bar/2bar/5bar/10bar/20bar/50bar/100bar			
Supply			
VDC: 12-30 Vdc			
Output			
mA: 4-20mADC / mA: 4-20mADC Hart			
Material			
	Diaphragm	Pressure Port	Housing
SS	SS316L	SS304	SS304
SL	SS316L	SS316L	SS316L
Electrical Connections			
DIN: Connector DIN43650			
IP68: Cable direct output			
Mechanical process connection			
FD1: Flush diaphragm, M20x1,5 male			
FD2: Flush diaphragm, 1/2" NPT male			
FD3: Flush diaphragm, 1/2" GAS male			
FD4: Threaded Connection M20x1,5 male			
FD5: Threaded Connection G1/2" male			
Sensor Type			
G: Relative pressure			
S: Relative pressure sealed			
A: Absolute pressure			



FD4 - FD5



FD1 - FD2 - FD3

Example order code:

	Range	Supply	Output	Material	Electrical Connection	Mechanical connection	Sensor Type
AI.EBar-LT	100Bar	VDC	mA	SL	DIN	FD5	G

Description Code:

Pressure Transmitter Model AI.EBar-LT

100Bar: Pressure Range

VDC: Supply 12-30 Vdc

mA: Output 4-20mA DC

SL: SS316 Diaphragm, Pressure port, Housing

DIN: DIN43650 Electrical Connections

FD5: Threaded connection G1/2" male

G: Sensor type, relative pressure

Tel.: +39 011 198 218 39 - E-mail: info@asit-ge.com - www.asit-ge.com

Le caratteristiche dichiarate possono cambiare senza alcun preavviso



ASIT ITALIA S.R.L.

Sede operativa e Uffici
Via Quintino Sella, 6
10020 Riva presso Chieri (TO)
T (+39) 011 198 218 39 - F (+39) 011 198 371 06

INFO@ASIT-GE.COM

WWW.ASIT-GE.COM



Company with
Certificate of Quality
System ISO 9001:2015
Cert n°38785/19/S